

The Milford Historian

Mission Statement: *We are organized exclusively for educational purposes. We bring together people who are interested in history, especially the history of the Village of Milford and Milford Township.*

July 2006 Picnic

It's picnic time again and this year we will be the guests of Historical Society member Hank Stricker. Hank's parents, Dr. Henry and Grace Stricker, played major roles in establishing the Milford Historical Society and the Milford Historical Museum. Early on, to create interest in forming a historical society, Henry and Grace put together display cases with artifacts from the area which they arranged to be featured in local businesses. Unfortunately, Dr. Stricker passed away before the museum opened in 1976. Grace, however, became the Museum's first curator and served in this capacity until the late 1970s. It wasn't unusual to see Grace giving tours of the Museum on Wednesdays and Saturdays. In 2002, their home was selected as the Society's Preservation and Restoration Award recipient. **The Stricker home is located on the north side of at 930 Weaver Road, about a half a mile north of Summit Street. Our picnic will be held on Sunday, July 23, 2006 and will begin at 2:00 p.m.**

Those who attended our May General Membership Meeting know that our scheduled speaker, Tami Averill, had an unexpected conflict at work and was unable to present her program at that time. Because this program has peaked a lot of interest in our membership and the community, Tami has agreed to present her program on the "Little Log Cabin in the Park" at our July Picnic. Tami will share behind-the-scenes stories about the cabin's construction and the current efforts to bring it and its pioneer spirit back to life. So, pack your picnic basket and get ready for a good time. Our general membership meetings are open to the public and all are invited. You don't have to be a member to enjoy this good time with people who like history! Bring your own table service and a dish to pass based on the first letter of your last name.

July 2006 Picnic

Sunday, July 23, 2006

2:00 p.m.

The Stricker Home

930 Weaver Road, Milford, MI

A-G

Dessert

H-R

Main Dish

S-Z

Salad

Everyone: Table service & beverage (coffee provided)

From Your Vice President...

With the warm weather and the 4th of July upon us, there are many activities available in the Milford area. During this busy time of the year, I hope you are able to enjoy some of the events sponsored by your Historical Society.

By the time this newsletter reaches your doorstep, our 4th of July parade will have marched down Main Street. Many thanks to **Kathryn and Russ Rheaume** and their band of volunteers for putting on another fabulous show. Leading this year's parade was the Historical Society's float celebrating our Museum's 30th anniversary. Special thanks to all involved members for putting together a spectacular float that celebrated our Museum's 30th anniversary and our nation's birthday. Well done, everyone!

July 7th and 8th were the dates of our Granny's Attic Sale. Hopefully everyone had the opportunity to stop by the Museum and pick out some special items from this year's sale. A big thank you goes out to **Duane Freitag** and his band of volunteers for their hard work on organizing another outstanding sale.

Finally, the end of June marked the last day for our fund raising event with **Klancy's** restaurant. **I would personally like to thank John and Christina Bennett and their hard working staff for extending the Historical Society the opportunity of a fund raiser.** I know that many of our members visited the restaurant and enjoyed the many delicious treats that they were served.

Going forward, we have our picnic on July 23rd to look forward to. The location of this year's picnic is at the home of **Hank Stricker**. On the Museum's 30th anniversary it is fitting that we gather at the Stricker home for our July meeting. Hank's parents, Dr. Henry Stricker and his wife Grace, were very instrumental in establishing the Milford Historical Museum. The Stricker family was originally from Detroit area, but decided to make their home in Milford. With their enthusiasm for history and the love of antiques, they soon began a labor of love that captured the interest and participation of others with their same passion. Soon a committee was formed and the beginning of our organization was born. Recently while cleaning the upstairs storage room, my group of cleaners ran across a frame of pictures of Grace Stricker giving a tour of the museum to a group of school children. (Grace was the museum's first curator.) It nice to know that 30 years later we are still giving tours of the Museum to our local school children, continuing the goals that our charter members envisioned for.

Sue Bullard, Vice President

Home Tour 2006...Our 30th Year!

Mark September 16th and 17th on your calendar and join in the celebration. **Home Tour 2006 features:**

- **Five beautiful area homes, plus...**
- **Special visits to sites on the first Home Tour**
- **An Oak Grove Cemetery Walk**
- **A 30th Anniversary Museum display**
- **Family activities at our Log Cabin**
- **The restored Power House will be open**
- **Tractor Show 2006 (Sunday only)**

This year we have five area homes that represent the growth and development of the Milford area. Visitors will gain an understanding of how older homes can be renovated to accommodate a 2006 lifestyle while preserving the home's character and charm. Viewing the design and decorating ideas in this year's homes will be a real treat. Want to take a sneak peek? In the Village, drive by 608 E. Commerce, 605 Hickory, and 633 Union. Then head west on Commerce Road into Milford Township passing our next home at 2095 W. Commerce and turn left on Grand Vista seeking the home at 514. Watch the *Milford Times* and our next newsletter for more details on this year's exciting homes.



Celebrating 30 Great Years!

musicians and arts throughout the two-day tour. Look for a schedule of performers in the tour booklet. The Beam-Waara home will also welcome visitors and provide special displays depicting a time gone by.

We welcome the Oak Grove Cemetery Committee's participation in our 30th celebration. They will identify the gravesites of Milford citizens who lived and worked in the homes included on this year's tour. They plan to provide special information at each gravesite. We hope visitors will stroll through our beautiful Oak Grove Cemetery and join us in learning about and honoring the people who helped to develop Milford.

It is hard to believe, but our Museum also opened its doors 30 years ago. During the home tour be sure to stop by the museum and view a display sharing some of the many activities that have occurred at the museum since 1976. We will celebrate the many citizens who had the foresight and wisdom to create the museum. It is a testament to Milford's past

and a pathway to our future.

Need more to do? The Log Cabin in South Side Park will be open and feature activities for the young and young at heart or tour the Power House and view the renovation progress. On Sunday step back in history and visit the Tractor Show located at Johnson Elementary School. We are also in the process of looking for a "Privy Dig" site and may include a Hibbard Tavern activity.

The Saturday, September 16th, tour begins at 10:00 am and goes 5:00 pm. The Sunday, September 17th, tour begins at Noon and ends at 5:00 pm. Home Tour tickets are \$13.00 for adults and \$11.00 for seniors. They will be on sale at the Museum and Milford Times office in September and at the home locations during the tour.

Be sure to come and join in the celebration! Better yet, call Sue Gumper (685-2691) or the Museum (685-7308) and volunteer to help during the tour.

Sue Gumper

Tractor Show 2006

Bill Crawford reminds us the Society's annual Tractor Show will again be held in conjunction with the Home Tour. Get your tractor ready, or just come and enjoy the hardware. All tractors are welcome: old, new, restored, or those in regular use ("working clothes"). Pre-registration is not required; just show up, then register. See you there on **Sunday, September 17th, 10-4 p.m., Johnson School, 515 General Motors Road.**

George Woodward Remembered

George Woodward recently passed away. George was a long-time member of both the Milford and Wixom Historical Societies. He served as a docent at our Museum for many years and would often give programs on his ancestor, Abel Peck. You might remember him from last year's picnic in Wixom. He was the gentleman that provided us with the very informative cemetery walk.

Welcome New Members!

We are pleased to announce that **Donna Selinsky, Dave Engel, and Scott and Kim Kish** are the newest members of the Milford Historical Society. Welcome Donna, Dave, Scott and Kim!

Welcome New Student Docents!

We would also like to welcome two new student docents to the Museum this summer: **Michelle Hier** from Milford High School and **Lisa White** from Hartland High School.

Milford Proving Ground 75 Years Ago

Member **John Sawruk** thought this circa 1930 Chevrolet ad (left) would be of interest to other Society members. It describes “how every feature of a Chevrolet design is proved before it is offered to the public” and features an illustration of the GM Proving Ground, which was only about five years old at this time. Thanks, John.

Powerhouse Update

Judith Reiter advises that at a recent Village Council Meeting, council members decided to “put the project on hold for a year” as they voted down a funding request for sewer/water installation in the 2006-2007 budget. We will continue to honor our commitment to open the Powerhouse to the public for viewing on selected days coinciding with events in the village and park. Stay tuned.

Museum

Beautification

A big Thank you to **Barb Miller** for the beautiful flower pots on our museum porch. Not only does she lovingly grow all the plants, Barb and Ed come by the museum every other day to water them— now that’s dedication!!!

Another big thank you goes out to **Mary Lou Gharrity, Sue Bullard and Sue Gumper** for cleaning out the storage room on the second floor of the museum—it looks wonderful!!!

And another thank you to **Judith Reiter** for trimming all the bushes around the museum.

Marlene Gomez

The Dairy Farmer

for Economical Transportation



Over 3,000,000 Miles of Testing

The General Motors Proving Ground, at Milford, Michigan, is the greatest outdoor laboratory ever devised for testing automotive products.

Here, over roads and hills of every type, Chevrolet cars are driven day and night—through zero cold and blistering heat. Already, Chevrolet cars have traveled more than 3,000,000 test miles on the Proving Ground roads—

—three million miles of harder, rougher, faster driving than a car would ever receive in the hands of any owner!

And that is the reason why Chevrolet quality stands supreme in the field of low-priced cars—

—why every feature of Chevrolet design is proved before it is offered to the public—

—why Chevrolet performance and comfort and driving ease are the finest ever offered in a low-priced automobile!

Go to your Chevrolet dealer—and make your own inspection of Chevrolet quality. Then you’ll know why millions have acclaimed Chevrolet as the world’s finest low-priced car.

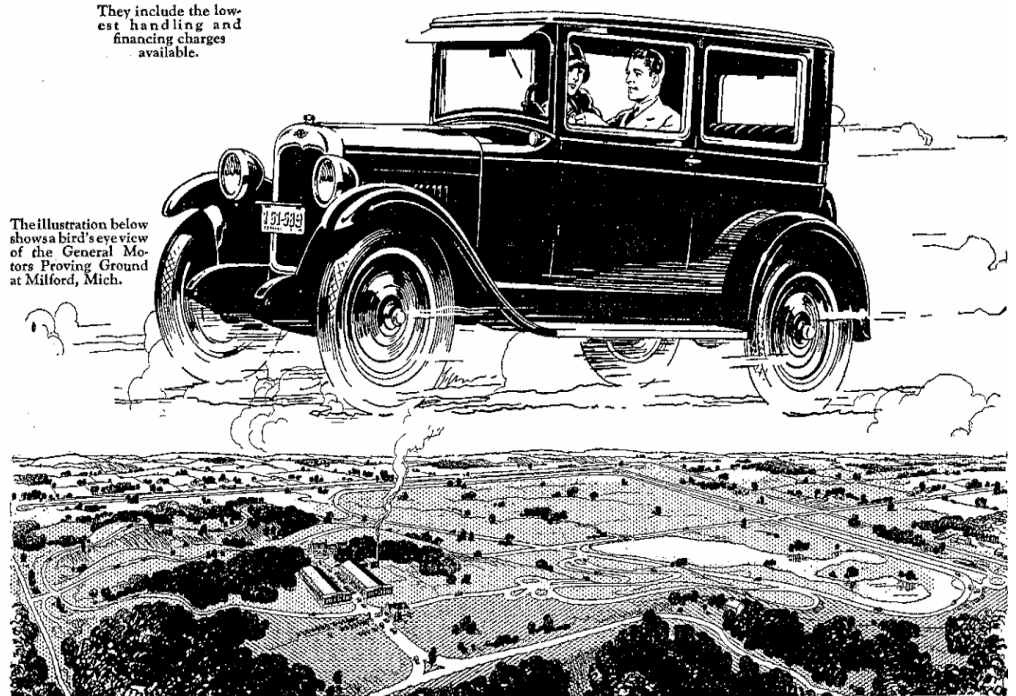
The COACH \$595

- The Touring or Roadster \$525
 - The Coupe \$625
 - The 4-Door Sedan \$695
 - The Sport Cabriolet \$715
 - The Imperial Landau \$745
 - ½-Ton Truck \$395 (Chassis only)
 - 1-Ton Truck \$495 (Chassis only)
- All prices f. o. b. Flint, Michigan

Check Chevrolet Delivered Prices

They include the lowest handling and financing charges available.

CHEVROLET MOTOR COMPANY, DETROIT, MICHIGAN
Division of General Motors Corporation



The illustration below shows a bird's eye view of the General Motors Proving Ground at Milford, Mich.

QUALITY AT LOW COST

NONPROFIT ORG.
U.S. POSTAGE
PAID
MILFORD, MI
Permit No.34

Phone: 248-685-7308
E-mail: milfordhistory@yahoo.com
Website: www.milfordhistory.org

WHAT'S HOT

2006 Picnic
930 Weaver Road
Sunday, July 23, 2006

DON'T MISS OUT!

Upcoming 2006 Events

- July 23.....** MHS Annual Picnic at 2:00 p.m. (930 Weaver Road)
- Sept. 7...**General Meeting and Program: "Chief Tipsico"
- Sept. 16-17...**Home Tour 2006
- Sept. 17.....**Tractor Show
- Nov. 16**General Meeting and Program: "An Evening With Dr. Weldon Petz"

**The
Milford Historian**
–
Newsletter of the Milford
Historical Society
published bimonthly
(six times per year)
–
Editor: Jay Qualman
–
Submission deadlines:
25th day of February, April,
June, August, October &
December

Annual Member Dues

Student..... \$5
Senior.....\$10
Individual.....\$15
Family..... \$25
Lifetime.....\$250
Small Business...\$50
Corporation... .250+

Please enroll me/us as a member(s) of the Milford Historical Society:

Name: _____
Address: _____
City-State-Zip _____
Phone No. _____ E-mail _____

Mail to: Milford Historical Society, 124 E. Commerce, Milford, MI 48381