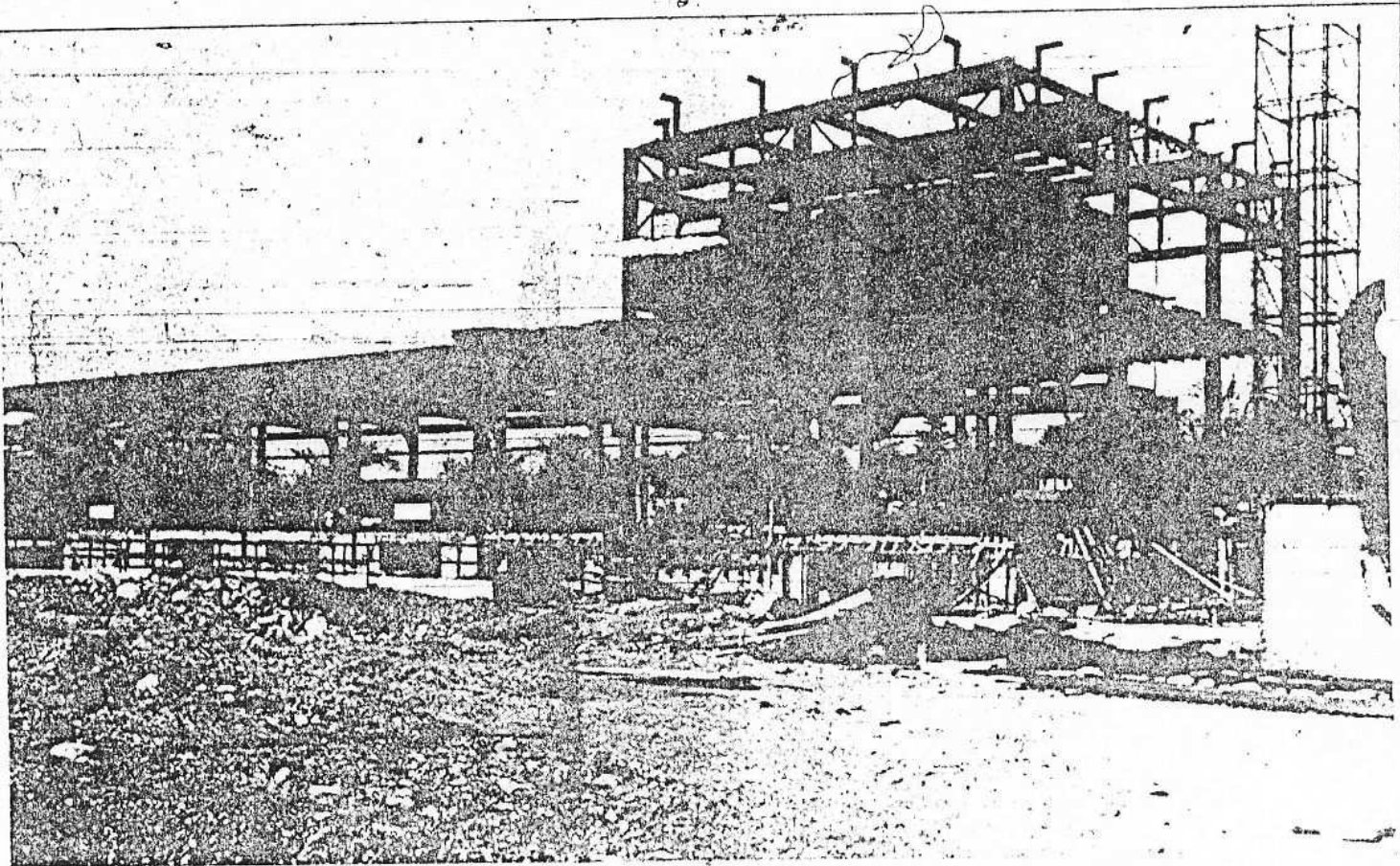


Future Home of Ford Industry in Milford



STEEL FRAME IS UP FOR NEW FORD PLANT

The large photo on this page of the Times shows the structural steel framework of the new Ford building under construction in Milford. When completed this plant will employ approximately 400 men in the manufacture and assembly of carburetors for the Ford Motor Company. Date of completion of the plant is indefinite, but work has been going on since last fall.

The Ford Motor Company has an extensive program under way at Milford, for the development of hydro-electric power, and they own both water powers in the village, the Pettibone Creek plants and the Huron River plant. Already the Pettibone source has been developed, by the erection on a new dam, which raises the water in Moore's lake 20 inches, and floods a large marsh area.

The Social Hour

Felicitia Bridge Club meets next Wednesday with Mrs. ...

F. F. A. Judging Teams In Lansing This Thursday

Twenty boys of the Milford Chapter, F. F. A., with their Adviser, Dean Heck, are in East Lansing this Thursday taking part in the state F. F. A. judging contests. Four teams from here will compete, one in judging of crops and seed identification, one in judging and identification of potatoes, one in dairy cattle and one in other farm livestock. Milford boys are county judging champions, recently taking all honors at the county meet. In the state they meet up with stiff competition, about 210 schools and some 2500 individuals taking part. The winning teams go to the National F. F. A. meet at Kansas City.

MAY DAY BREAKFAST FOR LITERARY CLUB

The Monday Literary Club held its

Tickets in Demand for Mother-Daughter Event

An assembly of Milford mothers and daughters will banquet together next Monday evening at the Presbyterian church, and a company of over 200 is expected. The ticket committee reports a brisk demand for places with the outlook for an overflow crowd.

The program committee has arranged an evening's entertainment in which about 20 people take part, and built around the theme, "As the Earth Turns." Spring, summer, fall and winter each will be represented in the decorative scheme, speaking and music. Toastmistress will be Mrs. Clarence Hubbell, and the time of the banquet is announced for 6:30

Postmaster Ready to Make Annual R. F. D. Inspection

Postmaster Edwin Boyle calls attention of rural patrons that the first and second week in May is the time for his annual inspection of rural routes, and he will accompany each