

## UPCOMING EVENTS

Jan 19—General Membership Meeting at the Milford United Methodist Church at 1200 Atlantic St in Milford. This is a pot luck meeting so see below for your pot luck assignments.

POT LUCK—A—F— Main Dish G—Q—Salads or sides, R—Z— Desserts

### Upcoming general Membership Meetings

Our November Turkey Pot Luck Meeting was well attended again. Thank you all for bringing all the good eats and I'm sure everyone got stuffed. Joan Moore our Guest Speaker taught us how much work goes into making a basket. Her Power Point and basket examples passed around showed us how beautiful a basket can be. It's amazing what they made baskets out of also. Remember the tiny baskets passed on a plate? I would lose those babies in a heartbeat.

### Mary Lou and her Museum to be Continued

Our January 19th Potluck Dinner will again be at the Methodist Church , 1200 Atlantic St. in Milford at 6:30 p.m Mary Lou and Joyce Clark will take us through the start , restoration and finished product of the MHS Museum.

Pictures will be shown, stories will be told, questions will be asked all after we all had enough to eat. Hopefully the weather is good and a good turn out.

### Mike Jewel (Bead Man) Again

Mile Jewel a Native Anishinaabe Indian will return by popular demand on March 16th. It will be a Potluck, same place same time.. Many members were absent that night due to another event in Milford. Mike again will tell his humorous tales of his life and bring back his stunning bead working and furs for everyone to admire.

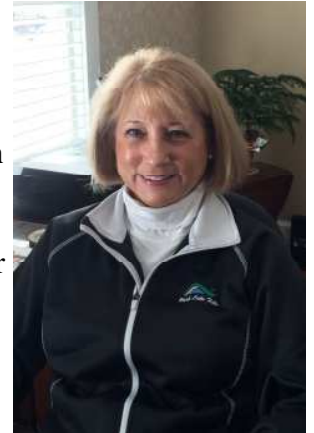
Mike's wife told me to stop him last time because he was talking to long. He wasn't really and I'm sure everyone is looking forward to hearing him again.

Stay warm and safe—Sandi

## From Our President, *Rena Valentine*

From Your President, Rena Valentine

Welcome to 2017 everyone! Happy holidays! We have definitely had an Indian summer, which has extended most of us with homes a chance to get more done in our yards and to complete some projects that sometimes we cannot get completed with our short seasons. I know on our home, we have had extensive renovations done, which took most of the spring, summer; and going into the fall to complete.



I think we are now ready to put our home on the Tour this coming fall of 2017. I also think we have other homes that would like to commit at this point. I will be going out to these people this spring to get an agreement signed. Some of these homes are new renovations, such as our own. I'm hoping with all of our support from our volunteers and homeowners, it should be another great success.

Our museum has closed for the year. The last day that it was open was Saturday, December 3<sup>rd</sup>. If anyone has a need for a tour, please call Elaine Hunter, our Museum Director to schedule such an event. There are still some projects that she will need help with over the winter, so don't hesitate to reach out to her. She can be reached via the museum phone number at 248-685-7308. Please see Elaine's article later in this newsletter for more information.

It's with a saddened heart that our Board member, Sandi Muirhead has retired her seat as of this year. Sandi has committed to finish out with the commitment as Program Director for 2017. She would like to have someone else step up for 2018 in this role, though. This also means we will need to replace her; along with two other open seats. We have such a great membership group here; we would like to hear from others that may want to take these seats on the Board. Please feel free to attend one of our Board meetings to make your voice heard if you may be interested. Our meetings are held at the Mary Jackson house on the 3<sup>rd</sup> Wednesday of each month at 7:00 pm. You can also call me personally at 248-514-9124 to discuss what the duties would be.

The 'Save the Depot' project is still in full gauge. There is still time  
(Continued on page 2)

**Our Mission Statement:** We are organized exclusively for educational purposes. We bring together people who are interested in history, especially the history of the village of Milford & Milford Township.

# MILFORD HISTORICAL SOCIETY

## BOARD OF DIRECTORS

### PRESIDENT

RENA VALENTINE 248-514-9124

### 1ST VICE-PRESIDENT

John Robinson 248-343-7772

### 2ND VICE-PRESIDENT

NORM WERNER 248-763-2497

### TREASURER

SUE BULLARD 248-685-8321

### RECORDING & CORRESPONDING SECRETARY

NORM WERNER (ACTING)

### DIRECTORS

Sue Gumper 248-685-2691

Mary Lou Gharrity 248-684-8835

Sandi Muirhead 248-310-4286

Leon Shuler 248-684-5854

Rich Harrison 248-935-5556

Jared Clouse \* 248-685-7308

Linda Dagenhardt 248-807-1204

Nancy Degenfelder \* 248-685-7308

\* - denotes Museum Researchers

MUSEUM DIRECTOR—ELAINE HUNTER  
248-685-7308



### Museum Report—

The closed sign may be on the door, but the museum has still been a busy place. Our new computers are being installed by Brad Acker. Brad is our volunteer IT person—he is not even a Historical Society member. We are going to have to work on that.

A very generous donation of over 200 complete period ensembles including hats, gloves and jewelry, a clothing rack, a steamer and closet accessories was received from Carol Watkins. We have received several donations of vintage clothes. A donation of a female manikin, a welcome addition for displaying dresses, was also received. I regret that I do not know the names of the last two people.

We sold several copies of our book “Ten Minutes Ahead of the Rest of the World” as Christmas gifts and ten books to the Berwyck subdivision’s home owners association. Also included with the books were newsletters and membership envelopes—perhaps a few new members! There are still visitors coming in, a cub scout troop January 30<sup>th</sup> and I have been contacted by a girl scout troop but no date has been set.

There are six student docents graduating in 2017. Three more than usual, however as juniors they were the students who stepped up to fill the vacancies we had in our docent staff. All six will be recipients of scholarships from the Historical Society based on the number of hours they worked. They are Taryn Johnson, Chase Glasser, Shaina Parks, Maggie Clooney, Hannah Rohrer, Hunter Barnes.

As always there are many projects to be done at the museum during the winter months. Also as always, many helping hands will be needed to accomplish the work. The tentative plan is as follows:

January—organizing, sizing, photographing, grouping by period all of the ensembles. It is planned to vacuum pack them for ease of storage. We can then access them as needed for dressing our many volunteers for home tour etc.

February—continue the accessioning process of recording our many donations and finding a home for all of them. This is a time consuming process and it will require some training by Marylou.

*(Continued on page 3)*

## The Milford Historian

Newsletter of the

**Milford Historical Society**

published bimonthly (six times per year)



Editor: Norm Werner

Email: [Historian@milfordhistory.org](mailto:Historian@milfordhistory.org)

*(From Our President—Continued from page 1)*

to donate to the cause! We do have until the end of January to prove to the developer that we have the money to move it. The plan is to plant it at the Southside Park, but time is of the essence. Please see the article from Linda Dagenhardt later in this newsletter. If you would like to contact her the number is 248-807-1204 or you may send a donation to the Milford Historical Society at 124 E. Commerce St., Milford, Mi. 48381. Your gift is 100% tax deductible.

Don't forget we have another great event planned at the Milford Presbyterian Church for another Bob Milne concert on March 24, 2017. Details to follow, but save the date.....

I hope everyone had a safe and wonderful holiday season!!!

## 2017 Membership Drive

January marks the beginning of our Annual Membership Drive. We appreciate your support in the past and we hope you will choose to continue your membership in 2017. Many individuals think that our society received funding from our local municipality, but our organization relies strictly on our generosity of our members. Your membership dues helps us maintain our museum, provide a bio-monthly newsletter and offer special programs throughout the year.

Your membership envelope will arrive in early January, please take the time to fill it out and return to the museum. What to save the cost of a postage stamp. Drop your envelope off in the mail slot at the museum. Better yet, bring it to the January membership meeting.

### Another way to support the Historical Society

Did you know that you could shop at Kroger, earn gas points and help out the Historical Society at the same time? It will cost you nothing and will not affect your benefits. You will need a Kroger Plus Card then simply register on line at [Krogercommunityrewards.com](http://Krogercommunityrewards.com). Signing up is simple and easy, then every time you shop the Historical Society will receive a donation from Kroger's.

---

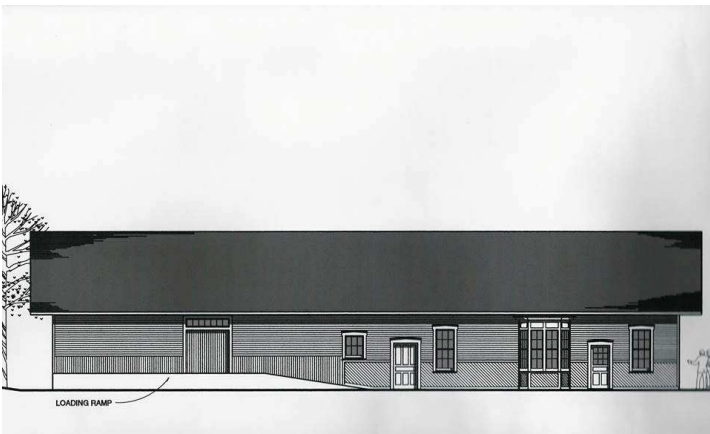
### Save The Milford Depot

Thank you to everyone who has donated, we are moving forward with our plans and hope everyone will jump on board. Our next step, January 10th., is the Milford Village Planning Commission to have the site plan approved, then on to the specifics of the move which will include Detroit Edison, CSX, Oakland Co., DAV Mar Development and Milford Water Department to name a few.

January is our month to raise funds, we presently have about \$30,000. after paying all the bills, fees, and architect, we will need \$90,000. to complete the move to the park.

A check to the Milford Historical Society with "Depot" in the memo line will leave a legacy for future generations.

The architectural drawings of the depot are on Facebook at Save the Milford Rail Road Depot. Here is one—



Thank you for your support.

(Museum Report -Continued from page 2)

March-continue the "freshening" of the museum. This winter to include painting the parlor ceiling and woodwork and perhaps the upstairs hall if enough help is forthcoming.

April-beginning our spring cleaning dusting the cobwebs, polishing the furniture and rewaxing the main display room/ log cabin floor. Begin organizing new displays. Actively interview new student docents from area high schools.

May-setting up the new displays for our opening on May 20<sup>th</sup>.

This is a rather ambitious schedule, but with historical society members playing an active part I think we can accomplish these goals.

There have been several suggestions for displays in the coming season. Among them-farming artifacts and implements reminiscent of Milford's beginnings. Ladies clothing from different eras, always popular. Toys and children related items. What to display is always a question. Trying to include things that will interest men, women and children is a challenge. I welcome any and all suggestions for future displays. I would also like to include any collections that members have and would be willing to share for a period of time. The museum has much to offer but I am sure our members also have interesting items.

It is my hope that we will be able to enhance the historical society's involvement in the community with an increased presence at community events. I think the society should have a group in every parade held. I would like to try and have the museum open during special events in town like "Ladies Night Out" and "Candle, Can and Carol". To have these ideas be successful will take planning, volunteers and advertising. To that end, I will be attending Chamber of Commerce and DDA meetings. That way the museum can be involved in some of these activities in the planning stages. Any other ideas for increasing our presence and expanding our membership can/should be addressed either to me or any other board member.

Current board members are: Rena Valentine, Norm Werner, John Robinson, Leon Schuler, Sue Gumper, Sue Bullard, Mary lou Gharrity, Rich Harrison. Linda Dagenhardt, Nancy Dagenfelder, Jared Clouse. We are all working together to help the Milford Historical Society grow. We do have an opening right now for an additional Board member, so if you have an interest in helping the MHS, please contact the Board President, Rene Valentine. Remember to tell everyone you meet----you don't have to be a relic to join.

Anyone who would like to volunteer for any of our projects and anyone who has a suggestion for a display please contact me by phone at 248 529-3393 or email at [donr4619@gmail.com](mailto:donr4619@gmail.com) I have my list ready to write down your offers of help and suggestions. It will take all of us to have continued success at the museum.

# Milford Historical Society

124 East Commerce

Milford, Michigan 48381

PRSRT STD  
U.S. POSTAGE  
PAID  
PERMIT NO. 11  
MILFORD, MI

## EXCITING NEWS! MARK MARCH 24, 2017 ON YOUR CALENDAR!

Back by popular demand, the one and only BOB MILNE, the number one ragtime pianist in the world, is coming back to MILFORD. The concert will be hosted by the MILFORD HISTORICAL SOCIETY and held at the



MILFORD PRESBYTERIAN CHURCH.

Bob Milne is considered by many to be the best Ragtime/Boogie-Woogie pianist in the world, Bob specializes in this music style that developed in

America in the late 1800's and early 1900's. It comes as no surprise that the Library of Congress designated him as a "National Treasure" when they documented his expertise for future generations, and that the U.S. State Department has utilized him as a "Musical Ambassador" in Japan and Switzerland.

Reserve the date and pass this on to friends, you do not want to miss this one! Bob Milne brings endless enthusiasm, enchanting ease of playing, and an engaging manner while telling stories about Ragtime and Boogie Woogie music with warmth and humor.

Summited by John Robinson, Milne Concert Chairman

Please enroll me/us as a member (s) of the Milford Historical Society:

Name: \_\_\_\_\_

Address: \_\_\_\_\_  
\_\_\_\_\_

Phone: \_\_\_\_\_ Email: \_\_\_\_\_

Mail to: Milford Historical Society, 124 East Commerce, Milford MI 48381

Phone: 248-685-7308

### Annual Member Dues:

Student	\$5	Family	\$25
Senior	\$10	Lifetime	\$250
Individual	\$15	Small Business	\$50
Corporation	\$250+		

Please let us know if you would prefer to receive your copy of the bi-monthly Historian via email. It saves us the postage and will get it to you sooner.