

UPCOMING EVENTS

Jan. 15—General Membership Meeting at the Methodist Church at 1200 Atlantic Street. It will begin at 6:30 P.M The program is “Show and Tell”, so bring something with a little history to it and tell everyone about it.

Pot Luck Assignments - A—F— Main Dish G—Q— Salad
or Side Dish R—Z— Desserts

Jan 28—MHS Board Meeting at the Mary Jackson House—7 PM

Feb 25 - **MHS Board Meeting** at the Mary Jackson House—7 PM



This month’s General Membership Meeting takes place at the usual venue and time (see above), but the program is a bit different.

This meeting is the

annual Show and Tell meeting where we invite members to bring something from their homes to share with the rest of the membership.

Objects don’t have to date back to the 19th Century and many items that were popular when we were all kids are now considered to be antiques (ourselves excluded, of course).

Scheduled Programs for 2015

Jan. 15th Potluck Unique, Unusual and Ugly Show and Tell Program

March 19th (Milford Library) An Evening with Mark Twain

April 16th Potluck Mary Lou and Main Street

May 21th Potluck Rosy the Riveter

July 16th (Kensington Park July Picnic) Jared Clouse

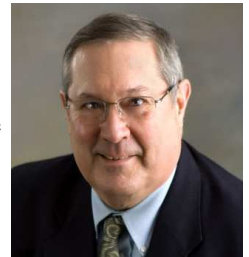
Sept. 17th Potluck Memories and Members (members share their Milford stories)

Oct. 15th Potluck Eleanor Roosevelt

Nov. 19th Potluck Thomas and Henry ???

From Your President, Norm Werner

Another successful year at the Milford Historical Museum came to a close on Dec 20 and the Museum has closed for the winter. Another era closed on that day as Marlene Gomez, our Assistant Museum Director for over 10 years celebrated her “retirement” with friends at a surprise party at the Museum.



Now that Marlene’s husband has retired they would like to travel more often, so



Marlene needs the freedom to leave town more often and for longer periods than she could while working at the Museum. We are counting on her still being involved in the Museum and the Historical Society, but wish her the best of luck in her “retirement.”

The Board gave Marlene Chamber Bucks from the Huron Valley Chamber of Commerce so that she and Arturo can visit any of the local restaurants. Several of the people who have worked with Marlene over the years also gave her going away gifts. Some of the ladies of the MHS prepared goodies to eat and everyone had a good time wishing Marlene well in her retirement.

In other year-end news, the Board made it official at the last meeting that Elaine Hunter is the new Museum Director. The Board also voted to bestow the title of Museum Director Emeritus upon Mary Lou Gharrity, a founding member of the MHS and long time Museum Director. Mary Lou is still quite active at the Museum, too. Past Directors never seem to really retire. We’re certainly happy that they don’t.

Elsewhere, progress is being made on the Huron Valley History Initiative, which is the project to digitize the microfilm library of back issues of the Milford Times. The grant that was requested from a State program for community projects has come down to three finalists, with our group and project being one of them. The process now involves getting the various communities in which the grant work would take place to vote on them, in order to show community support for the projects. There’s more on that inside and we need every MHS member and members of the community at large to sign on and vote for our project.

While the Museum is now closed for public visits, it will be anything but quiet for the winter. We have lots of winter plans for changes to enhance the visitors’ experience, including some painting and lighting projects to brighten the place up. Please let Elaine Hunter know if you would be willing to help this winter.

Our Mission Statement: *We are organized exclusively for educational purposes. We bring together people who are interested in history, especially the history of the village of Milford & Milford Township.*

MILFORD HISTORICAL SOCIETY

BOARD OF DIRECTORS

PRESIDENT/MUSEUM DIRECTOR

NORM WERNER 248-763-2497

1ST VICE-PRESIDENT

CAROL WATKINS 248-684-5045

2ND VICE-PRESIDENT

RENA VALENTINE 248-514-9124

TREASURER

SUE BULLARD 248-685-8321

RECORDING & CORRESPONDING SECRETARY

OPEN

DIRECTORS

Sue Gumpfer 248-685-2691

Mary Lou Gharrity 248-684-8835

Sandi Muirhead 248-684-0245

Leon Shuler 248-684-5854

Rich Harrison 248-935-5556

John Robinson 248-343-7772

Dawn Cuppetelli 248-410-6249

MUSEUM DIRECTOR—ELAINE HUNTER
248-685-7308

The Milford Historian

Newsletter of the

Milford Historical Society

published bimonthly (six times per year)



Editor: Norm Werner

Email: Historian@milfordhistory.org

Meet our new Museum Director

Ed.—Many of our members have met Elaine Hunter, our new Museum Director, at the Museum or at General Membership meetings; however, I asked her to write a short article for this edition of the Historian to introduce herself. Elaine is pictured below with one of our student docents at the recent retirement party for Marlene Gomez.



Hello, my name is Elaine Hunter. I have lived in the old school house at the south end of town for ten years. My husband Don & I have been renovating room by room for the entire time. We thought we were done but the first room needs to be repainted already!

I joined the historical society as soon as we moved to Milford. I was not able to be very involved other than home tour docent because I was still working. I retired from Huron Valley Hospital two years ago and since that time have become very involved with both the historical society and the Maria Moore quester chapter.

I have been a docent at the museum for the last two years and a board member for a little less than a year. Marlene Gomez decided to retire from her position at the museum as her husband retired and they wanted to travel more often. I was approached about becoming the museum director after serving on the museum committee. Several people have asked what my goals will be at the museum.

Two of the main things I think the museum needs are a fresher look and more community awareness of the museum's wide ranging collection of Milford historical memorabilia. To accomplish the first outdoor and indoor work is required. The outdoor landscaping project will need to be completed. Inside, I am having DTE evaluate our electrical system to see how we can update our lighting. Also, at the very least, a fresh coat of paint is needed on the ceiling in the main display room. The room has a very dark, dated appearance. Several more of the light filtering shades are needed to replace the old dark green ones. Some of the display cases will have to be moved to accommodate the new post office display that will be in the foyer.

To increase community awareness, I do think we need more publicity and to be open more often. Hopefully a widely advertised Spring opening ceremony with the new lighting and display in place will help. Also, being open on Wed., Sat., and Sun. from 1:00 to 4:00 will help. Different hours may be needed, only time will tell in that regard.

There are several long term projects including re-organizing storage, better use of existing space for computers and research, better record keeping of number of visitors and keeping track of who is in the museum and when. Those things will take time to establish and will be ongoing for some time.

To accomplish any goal at the museum it is going to take donations of both time and funds. In my role as director, I would ask any/all society members with an idea, an interest, a skill, a few free hours to contact me by email detah101@aol.com or at home 248 529-3393. The museum is going to be a busy place this winter, stop by, say hello, roll up your sleeves and help the historical society succeed in its mission of preserving Milford history.



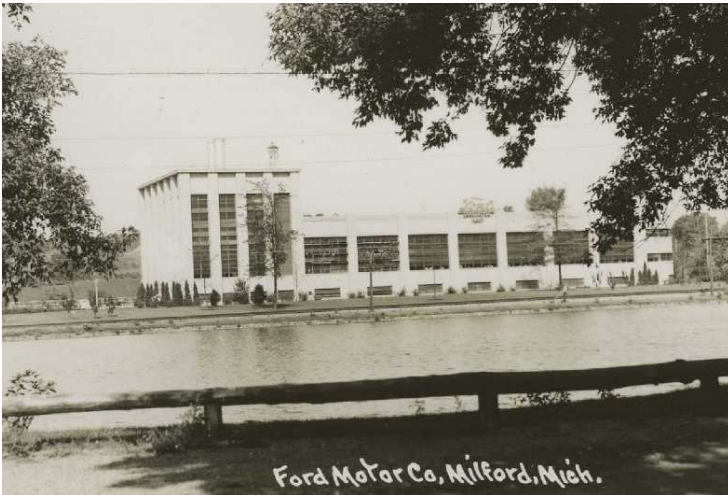
"You got a "C" in History?? How hard could it be?"

Special Insert: The History of Milford—These special inserts contain stories that have been researched and composed from the historical copies of the Milford Times that the Milford Historical Society maintains at the Museum for research purposes. They are offered for the enjoyment of our newsletter readers only and are subject to copywrite. They may not be republished or re-used without permission of the Milford Historical Society.

HENRY FORD COMES TO MILFORD

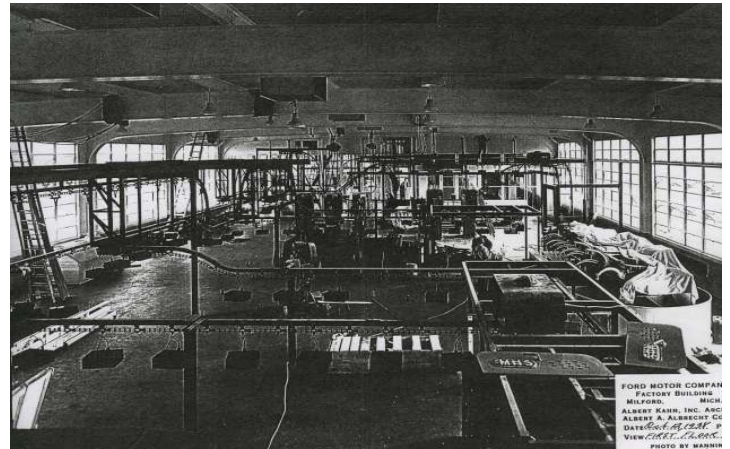
Nearly 106 years after the founding of Milford, Michigan, in 1938, Henry Ford eyed the potential of available water power and the hard working local farmers when choosing a site for his 12th of 23 “Village Industries.” Where workers could “have one foot in agriculture and the other in industry.”

Ford stated that “The small plant in a village or in the country makes for better working conditions because it permits a more natural life. This of course, is primarily due to the village or country itself. The life in an American village is a pretty fine thing. What the small village industry can do is make it possible for people to continue to enjoy the wholesome life of the country and at the same time enjoy a city income.”



Many of the male graduates of the class of 1938 from Milford High School were employed at the plant and most lived within 5 minutes of it. The pay was \$6 for an 8 hour day. This work was very valuable to the local economy during the late depression. Many of the 350 workers were recruited for higher positions at Ford’s automobile factories in and around Detroit.

On Tuesday March 15, 1938 the first steel arrived to set the new plant in motion- stated Karl Sanford of the Albrecht Company, superintendent in charge of constructing the 60’ by 200’ “assembly line” carburetor factory in



downtown Milford. The main building was one-story rising to a two-story rear section. By the end of June construction had stalled awaiting changes to be made to the engine room involving the auxiliary power and pouring of the floor. The Milford Times reports in it’s July 1, 1938 edition that “Henry Ford arrives this Thursday morning with a party to view progress of development. He arrived about 10 a.m. with a 2 car motorcade and Mr. Ford never left the car. The party drove slowly around the building and quickly whisked away.”

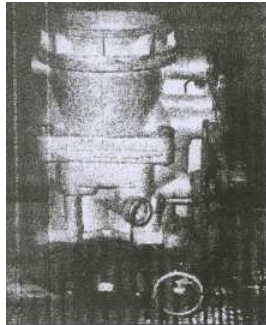
A sewer line was connected to the village sewer system. The electrical conduit was a 4” asbestos pipe laid in a 3ft. wide and 3ft. high trench and entirely covered in concrete. A connection with the Edison service is provided for at Commerce Street.

On August 5, 1938 the Milford Times reported that 2 steam boilers and huge storage tank unloaded from flat cars this week. The 600 and 300 horsepower boilers were fabricated by the Wicks Boiler Co. of Saginaw, Michigan. A steel storage tank, 64’ long by 7’ in diameter, weighing

(Continued on page 4)

37,000 pounds was built by Briggs Boiler Co. out of Akron, Ohio. This tank will hold 22,000 gallons of propane gas and will be housed outside of the plant. The glass in the windows of the factory was made of a special ground glass which diffused the sunlight during the daylight hours. A sidewalk was laid on the property from Oak Street along the parking lot, to the main entrance.

The first carburetors were completed on Monday, November 28, 1938. By December 2, 1938, 1,500 units were being produced per day. Pig iron came from the River Rouge Plant, zinc, steel, and brass were all trucked in to construct the Ford V8 carburetor comprised of 150 parts, nearly all of which were made from raw materials at the plant.



The Milford Historical Museum displays this Ford carburetor made at the Ford Motor Co. carburetor plant.

There was a machine operated iron foundry to cast the base of the carburetor, 2 large and 6 small parts were die-cast of zinc and alloyed with aluminum and magnesium. Holes not more than one 64th of an inch in diameter were die-cast in the part. Steel was stamped into other parts and zinc plated. The most tedious work was air-sealing the two halves by hand. Overhead conveyors carried parts to the hand assembly line. The final step was the testing of each product ‘that rolled off the line.’ The iron foundry also doubled with making a small bearing for the River Rouge plant. The spring portion of the factory also supplied the cigar lighter industry with necessary springs.

Henry Ford contracted with Albert Kahn to design a factory and power plant to be built in Milford. The Factory is now gone but the Art Deco designed Power Plant, containing two hydroelectric generators, that supplied power to the factory, remind us of two famous men, Henry Ford and Albert Kahn, who spent time in Milford.

In 1999, the Milford Historical Society established a Powerhouse Restoration Committee which works to

preserve this historical landmark. The Milford Historical Society Museum, located at 124 E. Commerce Street, houses a carburetor built at the Ford plant, and many vintage photos of these places and the times. (Photos are available for purchase.)



Voting to begin on digitization project grant

Many of you already know that the Milford Historical Society has partnered with several other organizations – libraries and historical groups – in the Huron Valley on a project to digitize the existing microfilm library of back issues of The Milford Times. The participants are the Milford Public Library, Milford Historical Society, Highland Public Library, Highland Historical Society, Commerce Public Library, Byer Farm / Commerce Historical Society, White Lake Public Library and White Lake Historical Society / Fisk Farm. Collectively, for this project, this group is known as the Huron Valley History Initiative.

One of the fund raising efforts that the group has initiated is a grant application to the Clarke Historical Library. The Clarke Historical Library offers an annual award valued at \$2,500 to create online access to a Michigan newspaper. The project is funded through the Robert and Susan Clarke Endowment, housed in the Clarke Historical Library of Central Michigan University.

For 2015 the finalists for this grant are:

- Alpena County George N. Fletcher Public Library
- Ionia Community Library
- Huron Valley History Initiative (Milford Historical Society)
- Traverse Area District Library (Traverse City)
- Bayliss Public Library (Sault Ste. Marie)

Final Selection Process:

The selection process for the winner of the grant for 2015 uses a voting-based contest between the communities that are represented by the finalist groups – in our case the local communities served by the group members listed above. The newspaper that receives the largest number of votes from the public will be digitized. There are two ways to vote for your newspaper: via Twitter or by sending in a Michigan picture postcard. Each Tweet received Jan. 19th-25th gets one vote; **each postcard received Jan. 19th-30th gets 100 votes!** Additionally we may retweet particularly interesting comments about a newspaper as these will help us spread the word. Make sure to follow us on the Clarke Library Twitter @DigMichNews for voting updates and pictures of the postcards we receive.

Twitter voting details:

- To vote for your community, simply send out a Tweet including the appropriate hashtag below from Monday January 19 (8 a.m.) through Sunday January 25 (5 p.m.)

Our group’s hashtag is #DigMilford

For example, one might send out a tweet: "Go #DigMilford! Help us win a grant contest by using this hashtag too." The hashtag allows us to track how many Twitter users have sent out tweets including the phrase attached to it. Please note that your Twitter account must be set to public in your profile in order for your hashtag to count as a vote. Tweets made by private accounts are not visible to the search tool or the larger Twitter community.



It is with mixed emotions I write this last article for the newsletter as I retired as Asst. Director of the Museum at the end of 2014. I have other obligations to take care of right now, but I have thoroughly enjoyed the last ten years at the museum. I have met so many interesting people that visit the museum, and all the wonderful people who volunteer at the museum. I will miss them all on a regular basis, but I plan to volunteer my time when I can.

Elaine Hunter is the new Director at the museum and please welcome her with open arms. She will do a fine job and welcomes any new suggestions/input. I will be available to help her through the initial training as will Mary Lou. And thanks to Norm Werner for his way of making all this happen easily! We will have a lot of good changes coming up.

Here is another article on one of our student docents who will be graduating in the Spring. Kim Bottenberg started at the museum in April of 2013. She is a senior at Milford High School and has been a great addition to our program at the museum. She has been on the National Honor Society her junior and senior years and has gotten all “A’s” throughout high school.

Along with working at the museum Kim also volunteers at the American Legion to help out veterans that need it. She has been in the marching band at MHS for 3 years, playing clarinet. She has received a highest academic honors award too. She has applied to Michigan State and University of Michigan for college and would like to go into pre-med.



Kim is a delight to have at the museum. She enjoys giving tours, modeling at the Mary Jackson teas, and helping out wherever she is needed. She loves international soccer, art and music. Good luck Kim!!!

Submitted by Marlene Gomez

Hunter Barnes is an honor roll student at Milford High School and is a junior this year. He loves to do reenactment from the civil war and has modeled in his ‘uniform’ at the Mary Jackson tea. He also has worked as a docent at the museum many times this year, (this is his first official year as a student docent; however, he has been much help last year too). Hunter will graduate in 2017.

Kim Bottenberg is a senior this year; also on the honor roll at Milford High School. Kim has also modeled in our Mary Jackson teas and has put in many hours at the museum giving tours and other duties. See Marlene’s article to the left.

Rebecca Darby attends International Academy West and will graduate in 2016. She has been available to help at our Home Tours and has put many hours in at the museum serving in a docent role, giving tours, etc.

Chase Glasser attends Notre Dame Preparatory High School and will graduate in 2017 and is also on the honor roll. He has many achievements in and out of school and is a history lover. He is new to our scholarship program this year and has worked at the museum much of the summer when we are open.

Nicole Manning attends Milford High School and is on the honor roll. She will graduate in 2016. She has modeled in our Mary Jackson teas and has been a great asset helping out with tours and other duties at the museum.

Jordyn Pair will also be graduating this year. Jordyn is home schooled; on the honor roll; and has been a valuable asset modeling at our Mary Jackson teas and helping out in many capacities at the museum.

Erin Scews is new to the scholarship fund this year and is also home schooled; also on the honor roll. She will graduate in 2016. Erin has a strong interest in history and researching it. She’s also become interested in historic clothing and has designed her own 1857 visiting dress. She has become a great asset in helping out with tours and other duties at the museum.

Shaina Parks is also new to the scholarship program this year. She attends St. Catherine of Siena Academy and will graduate in 2017. Shaina is also an honor roll student. She has helped out at the Mary Jackson teas; Home Tour; and helping with tours at the museum, along with other duties that entails.

Thank you to all of you for your dedication and work to make our Historical Society a success.

This year I have acquired the roll of Student Docent Coordinator and couldn’t be prouder of our students! Without them, we would have a hard time making this society the success it’s come to be.

Rena Valentine

Milford Historical Society

124 East Commerce

Milford, Michigan 48381

PRSR STD
U.S. POSTAGE
PAID
PERMIT NO. 11
MILFORD, MI

(Grant Voting - Continued from page 4)

- Do you have questions about using Twitter? - Carol Watkins will be at the museum Sundays – January 11 and 18 from 1-3 PM with postcards and help with using a hashtag.

Mail-In Voting Details:

- Don't have access to a computer regularly? You can still participate! To show support for your community, send a picture postcard featuring any Michigan image to the Clarke. Mail votes should be postmarked on or after January 19 and must be received by the Clarke Library on or before January 30.


- **Each postcard we receive will be worth 100 online votes.** Be sure to designate your chosen finalist either by using

the Twitter hashtag or simply writing the name of the city and mail to:

Clarke Historical Library
Central Michigan University
Mount Pleasant, MI 48859

- It probably should go without saying, but all post-cards become property of the Clarke Library and will be added to our postcard collection (at least the ones that aren't duplicates).

- Be sure to follow the voting progress on our page @DigMichNews or by twitter @DigMichNews.

 Please enroll me/us as a member (s) of the Milford Historical Society:

Name: _____

Address: _____

Phone: _____ Email: _____

Mail to: Milford Historical Society, 124 East Commerce, Milford MI 48381

Phone: 248-685-7308

Annual Member Dues:

Student	\$5	Family	\$25
Senior	\$10	Lifetime	\$250
Individual	\$15	Small Business	\$50
Corporation	\$250+		

Please let us know if you would prefer to receive your copy of the bi-monthly Historian via email. It saves us the postage and will get it to you sooner.